

# Chemicals And Programs That Deliver





# Ryko has solutions for all your cleaning needs

Ryko offers car wash chemicals and solutions that deliver. Our full line of chemical products include:

- Detergents
- Waxes
- Pre-Soaks
- Conditioners
- Self Service
- Special Purpose

Ryko Manufacturing Company is the industry expert when it comes to getting vehicles clean. Through years of experience and extensive testing, Ryko has developed a car wash solutions line with the most efficient and cost effective products available on the market. All Ryko car wash solutions are formulated, mixed and packaged at our own facility, ensuring consistent results and satisfaction in use with all vehicle wash systems. Ryko offers superior, environmentally safe cleaning products for both the automatic and the self-service car wash industry



NAME	H-CLASS	APPEARANCE	FRAGRANCE	PH	DENSITY	DOT LABELING	SIZE AVAILABILITY
Action Shine Detergent	Yes	Clear to Amber Liquid	Bubble Gum	8-9 (typical)	8.52 lbs/gal	None (non-hazardous)	5, 15 & 55 Gallons
Clear Coat Protectant	No	Clear to Amber Liquid	Raspberry	6.5 (typical)	8.08 lbs/gal	None (non-hazardous)	5, 15 & 55 Gallons
Conditioner Concentrate	Yes	Clear to Amber Liquid	Strawberry	7.3 (typical)	7.4 lbs/gal	None (non-hazardous)	5, 15 & 55 Gallons
High Foam Detergent	No	Clear to Amber Liquid	Pine	8-9 (typical)	8.35 lbs/gal	None (non-hazardous)	5, 15 & 55 Gallons
Lemon Fresh High Pressure Detergent	Yes	Yellow Liquid	Lemon	13 (typical)	8.74 lbs/gal	None (non-hazardous)	5, 15 & 55 Gallons
New Pine Low Pressure Presoak	Yes	Green Liquid	Pine	13.5 (typical)	9.58 lbs/gal	None (non-hazardous)	5, 15 & 55 Gallons
Prep Pro I Presoak	Yes	Pink Clear Liquid	Cherry	1.5 (typical)	8.5 lbs/gal	None (non-hazardous)	5, 15 & 55 Gallons
Prep Pro II Presoak	Yes	Blue/Green Clear Liquid	Cherry	1.3 (typical)	8.91 lbs/gal	None (non-hazardous)	5, 15 & 55 Gallons
Pro Finish H Presoak	Yes	Red Clear Liquid	Cherry	>13	9.16 lbs/gal	None (non-hazardous)	5, 15 & 55 Gallons
Supreme Clean/SC HW Presoak	No	Red Clear Liquid	Cherry	>13	9.16 lbs/gal	None (non-hazardous)	5, 15 & 55 Gallons
Razberry Clear Coat	Yes	Clear to Amber Liquid	Raspberry	7.3 (typical)	7.4 lbs/gal	None (non-hazardous)	5, 15 & 55 Gallons
Tire & Engine Cleaner	Yes	Fluorescent Green Liquid	Pine	13.4 (typical)	8.91 lbs/gal	None (non-hazardous)	5, 15 & 55 Gallons
Red Foaming Detergent Concentrate	Yes	Dark Red Liquid	Bubble Gum	8-9 (typical)	8.6 lbs/gal	None (non-hazardous)	5, 15 & 55 Gallons
Blue Foaming Detergent Concentrate	Yes	Dark Blue Liquid	Bubble Gum	8-9 (typical)	8.6 lbs/gal	None (non-hazardous)	5, 15 & 55 Gallons
Yellow Foaming Detergent Concentrate	Yes	Dark Yellow Liquid	Bubble Gum	8-9 (typical)	8.6 lbs/gal	None (non-hazardous)	5, 15 & 55 Gallons
Blue Foaming Wax Concentrate	Yes	Dark Blue Liquid	Cherry	8 (typical)	8.12 lbs/gal	None (non-hazardous)	5, 15 & 55 Gallons
Red Foaming Wax Concentrate	Yes	Dark Red Liquid	Cherry	8 (typical)	8.12 lbs/gal	None (non-hazardous)	5, 15 & 55 Gallons
Yellow Foaming Wax Concentrate	Yes	Dark Yellow Liquid	Cherry	8 (typical)	8.12 lbs/gal	None (non-hazardous)	5, 15 & 55 Gallons
Wax Luster R	No	Clear to Amber Liquid	None	7.3 (typical)	7.87 lbs/gal	None (non-hazardous)	5, 15 & 55 Gallons
Citrus Shine Wax R	No	Clear to Amber Liquid	Citrus	7.3 (typical)	7.87 lbs/gal	None (non-hazardous)	5, 15 & 55 Gallons
White Foam Detergent	No	Clear to Amber Liquid	Bubble Gum	8-9 (typical)	8.37 lbs/gal	None (non-hazardous)	5, 15 & 55 Gallons
Rinse Off	No	Blue, Clear Liquid	None	7-8 (typical)	8.54 lbs/gal	None (non-hazardous)	5, 15 & 55 Gallons
Rust Inhibitor	No	Clear to Amber Liquid	None	-	8.4 lbs/gal	None (non-hazardous)	5, 15 & 55 Gallons
Tire Cleaner	No	Clear to Yellow Liquid	None	-	9.3 lbs/gal	Corrosive (PG-II)	5, 15 & 55 Gallons
Mountain Pine Detergent	No	Clear to Amber Liquid	None	8-9 (typical)	8.35 lbs/gal	None (non-hazardous)	5, 15 & 55 Gallons

#### DILUTION RANGE

High Foam Detergent	1:40 to 1:60 for foam bath, 1:800 to 1:1000 during brush wash
White Foam Detergent	1:75 to 1:100 for foam bath. 1:1400 to 1:1600 during brush wash
Action Shine Detergent	1:225 to 1:300 for foam bath, 1:3800 to 1:4200 during brush wash
Wax Luster R/Citrus Shine R	1:500 to 1:800
Clear Coat Protectant	1:500 to 1:800
Conditioner Concentrate	1:1000 to 1:1600
Razberry Clear Coat	1:1000 to 1:1600
TriFoam Detergent	1:125 to 1:200
TriFoam Wax	1:125 to 1:200
Prep Pro I	1:100 to 1:160
Prep Pro II Presoak	1:80 to 1:100
Supreme Clean/Supreme Clean HW	1:60 to 1:80
Pro Finish H	1:80 to 1:120
Lemon Fresh High Pressure Detergent	1:750 to 1:900
New Pine Low Pressure Presoak	1:285 to 1:350

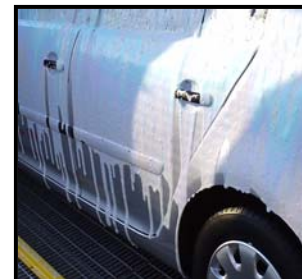




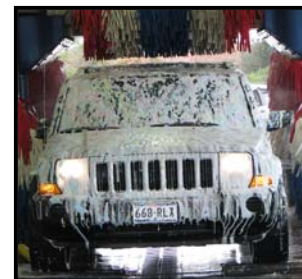
# Detergents

**ACTION SHINE DETERGENT** – IS AN ULTRA CONCENTRATED DETERGENT FORMULATED FROM A BLEND OF QUALITY SURFACTANTS THAT IS DESIGNED TO DELIVER SUPERIOR LUBRICITY TO RYKO FOAMBRITE BRUSHES AND OTHER TYPES OF FRICTION MATERIAL. ACTION SHINE DETERGENT PRODUCES A THICK, RICH FOAM FOR CUSTOMER APPEAL. BUBBLE GUM SCENTED

**H-CLASS**



**HIGH FOAM DETERGENT** – IS A FRICTION DETERGENT FORMULATED FROM A BLEND OF QUALITY SURFACTANTS THAT IS DESIGNED TO DELIVER SUPERIOR LUBRICITY TO RYKO FOAMBRITE BRUSHES AND OTHER TYPES OF FRICTION MATERIAL. PRODUCES A THICK, RICH FORAM FOR CUSTOMER APPEAL. NON-SCENTED. A SCENTED VERSION, MOUNTAIN PINE DETERGENT, IS ALSO AVAILABLE FOR ADDITIONAL CUSTOMER APPEAL.



**RED FOAMING DETERGENT** – IS AN ULTRA CONCENTRATED FRICTION DETERGENT FORMULATED FROM A BLEND OF QUALITY SURFACTANTS THAT IS DESIGNED TO DELIVER SUPERIOR LURICITY TO RYKO FOAMBRITE BRUSHES AND OTHER TYPES OF FRICTION MATERIAL. PRODUCES A THICK, RICH FOAM AND DELIVERS A HIGHLY VIVID COLOR. BUBBLE GUM SCENTED FOR THE ULTIMATE IN CUSTOMER APPEAL

**H-CLASS**



**BLUE FOAMING DETERGENT** – IS AN ULTRA CONCENTRATED FRICTION DETERGENT FORMULATED FROM A BLEND OF QUALITY SURFACTANTS THAT IS DESIGNED TO DELIVER SUPERIOR LURICITY TO RYKO FOAMBRITE BRUSHES AND OTHER TYPES OF FRICTION MATERIAL. PRODUCES A THICK, RICH FOAM AND DELIVERS A HIGHLY VIVID COLOR. BUBBLE GUM SCENTED FOR THE ULTIMATE IN CUSTOMER APPEAL

**H-CLASS**



---

---

---

## *Chemicals and Programs that Deliver*

**YELLOW FOAMING DETERGENT** – IS AN ULTRA CONCENTRATED FRICTION DETERGENT FORMULATED FROM A BLEND OF QUALITY SURFACANTS THAT IS DESIGNED TO DELIVER SUPERIOR LURICITY TO RYKO FOAMBRITE BRUSHES AND OTHER TYPES OF FRICTION MATERIAL. PRODUCES A THICK, RICH FOAM AND DELIVERS A HIGHLY VIVID COLOR. BUBBLE GUM SCENTED FOR THE ULTIMATE IN CUSTOMER APPEAL

**H-CLASS**



**WHITE FOAM DETERGENT** – IS A HIGHLY CONCENTRATED FRICTION DETERGENT FORMULATED FROM A BLEND OF QUALITY SURFACANTS THAT IS DESIGNED TO DELIVER SUPERIOR LURICITY TO RYKO FOAMBRITE BRUSHES AND OTHER TYPES OF FRICTION MATERIAL. PRODUCES A THICK, RICH FOAM . BUBBLE GUM SCENTED FOR THE ULTIMATE IN CUSTOMER APPEAL



ALL RYKO DETERGENTS ARE COMPATIBLE WITH ALL TYPES OF WATER QUALITY AND WITH ALL TYPES OF RECLAIM SYSTEMS. RYKO DETERGENTS ARE SAFE FOR CAR FINISHES AND WILL NOT STRIP WAX OFF OF AUTOMOBILES.





# WAXES

**RED FOAMING WAX** – IS AN ULTRA CONCENTRATED, EASY TO RINSE PRODUCT THAT PROMOTES SURFACE BEADING TO AID IN DRYING A VEHICLE WHEN USED IN CONJUNCTION WITH A DRYER. PRODUCED A THICK, RICH FOAM WITH A HIGHLY VIVID COLOR. PLEASING CHERRY SCENT FOR THE ULTIMATE IN CUSTOMER APPEAL

**H-CLASS**



**BLUE FOAMING WAX** – IS AN ULTRA CONCENTRATED, EASY TO RINSE PRODUCT THAT PROMOTES SURFACE BEADING TO AID IN DRYING A VEHICLE WHEN USED IN CONJUNCTION WITH A DRYER. PRODUCED A THICK, RICH FOAM WITH A HIGHLY VIVID COLOR. PLEASING CHERRY SCENT FOR THE ULTIMATE IN CUSTOMER APPEAL

**H-CLASS**



**YELLOW FOAMING WAX** – IS AN ULTRA CONCENTRATED, EASY TO RINSE PRODUCT THAT PROMOTES SURFACE BEADING TO AID IN DRYING A VEHICLE WHEN USED IN CONJUNCTION WITH A DRYER. PRODUCED A THICK, RICH FOAM WITH A HIGHLY VIVID COLOR. PLEASING CHERRY SCENT FOR THE ULTIMATE IN CUSTOMER APPEAL

**H-CLASS**



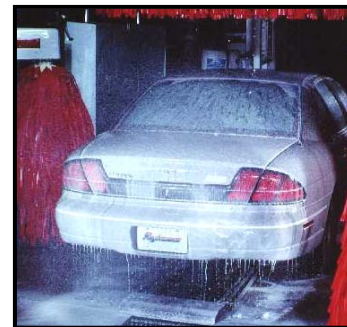
---

---

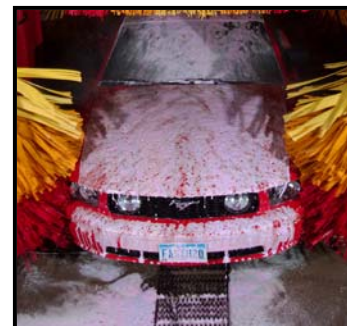
---

## *Chemicals and Programs that Deliver*

**CITRUS SHINE R WAX** – HELPS PROMOTE SURFACE BEADING TO AID IN DRYING A VEHICLE WHEN USED IN CONJUNCTION WITH A DRYER. PROTECTS SURFACE FROM WATER, WEATHER AND ROAD CONTAMINANTS WHILE DELIVERING AN EYE-PLEASING SHINE. FORMULATED TO REDUCE SMEARING OF WINDOWS WHEN WUPERS ARE USED. PLEASING CITRUS SCENT FOR CUSTOMER APPEAL.



**WAX LUSTER R WAX** – HELPS PROMOTE SURFACE BEADING TO AID IN DRYING A VEHICLE WHEN USED IN CONJUNCTION WITH A DRYER. PROTECTS SURFACE FROM WATER, WEATHER AND ROAD CONTAMINANTS WHILE DELIVERING AN EYE-PLEASING SHINE. FORMULATED TO REDUCE SMEARING OF WINDOWS WHEN WUPERS ARE USED. WAX LUSTER R IS AN UNSCENTED PRODUCT.



ALL RYKO WAXES ARE COMPATIBLE WITH OTHER RYKO CHEMICAL PRODUCTS, ALL TYPES OF WATER QUALITY AND WITH ALL TYPES OF RECLAIM SYSTEMS WHICH MINIMIZES "BLACKENING" OF WASH EQUIPMENT AND WALLS.





# Pre-Soaks

**SUPREME CLEAN** – IS AN EFFECTIVE, HIGH ALKALINE FORMULA THAT CONTAINS A SPECIAL BLEND OF SURFACANTS THAT IS DESIGNED TO QUICKLY WET, PENETRATE AND REMOVE STUBBORN ROAD FILM. PROVIDES CONSISTENT CLEANING WITH EITHER HOT OR COLD WATER.



**SUPREME CLEAN HW** – DELIVERS EXCEPTIONAL WASH QUALITY WHEN POOR WATER CONDITIONS (I.E. HARD WATER) ARE PRESENT. WILL NOT CAUSE INJECTORS TO CLOG WHEN MIXED WITH HARD WATER. SAME CLEANING PROPERTIES AS SUPREME CLEAN IN SOFT WATER

**PREP PRO I** – A SAFE AND EFFECTIVE LOW PH FORMULA THAT CONTAINS A SPECIAL BLEND OF SURFACANTS THAT AIDS IN THE CLENAING OF GLASS AND CHROME. WHEN USED WITH PREP PRO II, IT HELPS PROVIDE A SUPERIOR WASH. IT PROVIDES CONSISTENT CLEANING WHEN USED WITH HOT OR COLD WATER. APPEALING CHERRY SCENT.



**H-CLASS**

**PREP PRO II** – IS AN EFFECTIVE HIGH ALKALINE FORMULA THAT CONTAINS A SPECIAL BELND OF SURFACANTS THAT IS DESIGNED TO QUICKLY WET, PENETRATE AND REMOVE STUBBORN ROAD FILM WHEN USED IN CONJUNCTION WITH PREP PRO I. PROVIDES CONSISTENT CLEANINE WHEN USED WITH EITHER HOT OR COLD WATER. CHERRY SCENTED.



**H-CLASS**

**PRO FINISH/PROFINISH H** – IS AN EFFECTIVE, HIGH ALKALINE FORMULA THAT CONTAINS A SPECIAL BLEND OF SURFACANTS THAT IS DESIGNED TO QUICKLY WET, PENETRATE AND REMOVE STUBBORN ROAD FILM. PROVIDES CONSISTEN CLEANING WITH EITHER HOT OR COLD WATER. APPEALING CHARRY SCENT.



**H-CLASS**

---

---

---

## *Chemicals and Programs that Deliver*

# Special Purpose

**TIRE CLEANER** – IS A HIGH ALKALINE CLEANER DESIGNED FOR CLEANING BOTH TIRES AND WHEELS IN AUTOMATIC WASH SYSTEMS. IT IS A HEAVY DUTY CLEANSING AGENT WHICH IS DESIGNED TO HELP REMOVE ROAD FILM AND BRAKE DUST FROM WHITE WALL TIRES AND WHEELS. IT IS TYPICALLY APPLIED BEFORE THE WASH CYCLE.



**RUST INHIBITOR** – IS DESIGNED FOR USE IN WASH EQUIPMENT THAT HAS AN UNDERCAR APPLICATION. HELPS PROTECT METAL COMPONENTS FROM RUSTING DUE TO EXPOSURE FROM ELEMENTS SUCH AS MOISTURE AND ROAD SALT. REGULAR USE OF THIS PRODUCT WILL HELP MINIMIZE THE EFFECTS OF RUSTING FOUND ON THE UNDERCARRIAGE OF A VEHICLE.



**WALL CLEANER** – A HIGHLY CONCENTRATED, NON-CORROSIVE ACID-BASED CLEANER. AS EFFECTIVE AS HF-BASED WALL CLEANERS, BUT MUCH SAFER TO USE. DESIGNED TO MINIMIZE CORROSIVE EFFECTS ON ALUMINUM AND STAINLESS STEEL.





# Conditioners

**RAIN SHIELD SURFACE PROTECTANT** – OFFERS A SIGNIFICANT IMPROVEMENT IN PERFORMANCE AND PRICE COMPARED TO OTHER LEADING COMPETITORS. OPTIMUM WATER REPELLENCY, BEADING ACTION AND LONGEVITY. PROVIDES BEADING ACTION THAT SWEEPS OFF WATER, PREVENTING WATER SPOTS AND PROVIDING MAXIMUM DRYING EFFECT

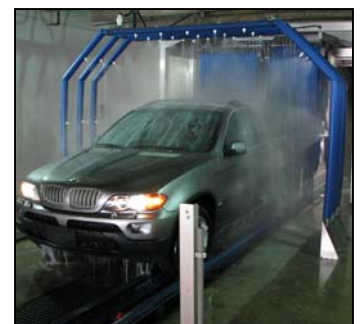


**CONDITIONER CONCENTRATE** – ULTRA-CONCENTRATED. HELPS PROMOTE BEADING OF WATER TO AID IN DRYING WHEN USED IN CONJUNCTION WITH A DRYER. PROTECTS FROM WATER WEATHER AND ROAD CONTAMINANTS. GIVES VEHICLE AN EYE-PLEASING SHINE. FORMULATED TO KEEP WINDOWS FROM SMEARING WHEN WINDSHIELD WIPERS ARE USED. APPEALING STRAWBERRY SCENT.



**H-CLASS**

**RAZBERRY CLEAR COAT** – ULTRA CONCENTRATED. CONTAINS POLYMERS THAT PROMOTE LONG LASTING PROTECTION FROM WATER, WEATHER AND ROAD CONTAMINANTS. HELPS PROMOTE BEADING OF WATER TO AID IN DRYING WHEN USED IN CONJUNCTION WITH A DRYER. FORMULATED TO KEEP WINDOWS FROM SMEARING WHEN WIPERS ARE USED. PLEASING RASPBERRY SCENT



**H-CLASS**

---

---

---

## *Chemicals and Programs that Deliver*

**RINSE OFF** – IS A HIGH QUALITY DRYING AGENT. UNLIKE A WAX OR CONDITIONER PRODUCT THAT MAKES WATER BEAD, RINSE OFF PROMOTES A SHEETING ACTION ON VEHICLE SURFACES. THIS SHEETING ACTION WILL INSURE EVEN EVAPORATION OF WATER FROM THE VEHICLE SURFACE TO PREVENT WATER SPOTTING.



**CLEAR COAT** –HELPS PROMOTE BEADING OF WATER TO AID IN DRYING WHEN USED IN CONJUNCTION WITH A DRYER. CONTAINS POLYMERS THAT PROMOTE LASTING PROTECTION FROM WATER, WEATHER AND ROAD CONTAMINANTS. FORMULATED TO KEEP WINDOWS FROM SMEARING WHEN WINDSHIELD WIPERS ARE USED. APPEALING RASPBERRY SCENT.



ALL RYKO CONDITIONERS ARE COMPATIBLE WITH OTHER RYKO CHEMICAL PRODUCTS, ALL TYPES OF WATER QUALITY AND WITH ALL TYPES OF RECLAIM SYSTEMS WHICH MINIMIZES “BLACKENING” OF WASH EQUIPMENT AND WALLS.

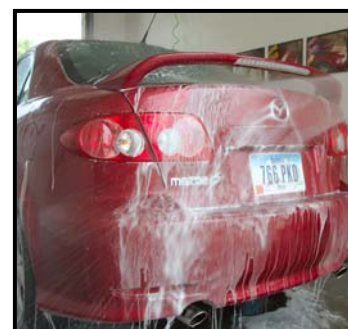




## Self-Service

**LEMON FRESH HIGH PRESSURE DETERGENT** – IS AN EXCELLENT CLEANING HIGH PRESSURE DETERGENT THAT IS SAFE FOR USE ON CLEAR COAT, CONVENTIONAL AND REPAINTED SURFACES. FORMULATED NOT TO STRIP WAX OFF OF VEHICLE SURCES. CUSTOMER PLEASING LEMON SCENT FOR ADDED APPEAL

**H-CLASS**



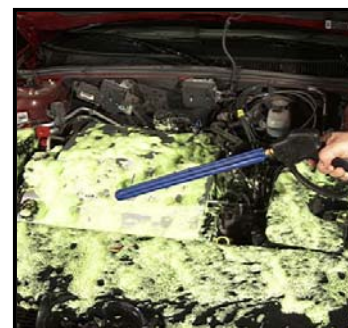
**NEW PINE LOW PRESSURE PRE-SOAK** – AN EFFECTIVE HIGH ALKALINE FORMULA CONTAINING A SPECIAL BLEND OF SURFACANTS DESIGNED TO QUICKLY WET, PENETRATE AND REMOVE STUBBORN ROAD FILM. PROVIDES CONSISTENT CLEANING IN BOTH HOT AND COLD WATER. SAFE FOR USE ON CLEAR COAT, CONVENTIONAL OR REPAINTED SURFACES. PINE SCENTED

**H-CLASS**



**TIRE & ENGINE CLEANER** – A HIGH FOAMING PRODUCT THAT QUICKLY WETS, PENETRATES AND LIFTS TOUGH SOILS, OILS AND GREASE. SAFE FOR USE ON WHEELS AND ENGINES. APPEALING PINE SCENT FOR ADDED CUSTOMER APPEAL.

**H-CLASS**





- Detergents
- Waxes
- Pre-Soaks
- Conditioners
- Special Purpose
- Self Service

***SOLUTIONS TO MEET ALL YOUR CLEANING NEEDS***



11600 NW 54<sup>th</sup> Avenue  
Grimes, Iowa, 50111  
Phone: (515) 986-3700  
Fax: (515) 986-3621  
E-mail: [sales@ryko.com](mailto:sales@ryko.com)  
[www.ryko.com](http://www.ryko.com)

20335-093 112807